

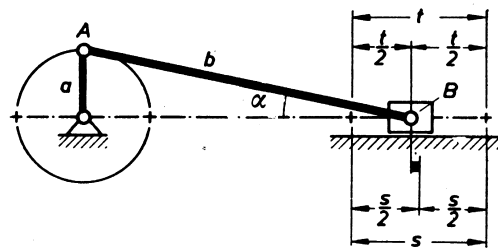
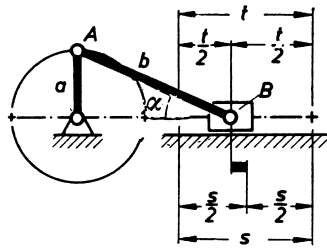
Das Schubstangenverhältnis

Tafel 3.7

$\lambda = 0,4$

zentrische Schubkurbel

$\lambda = 0,2$

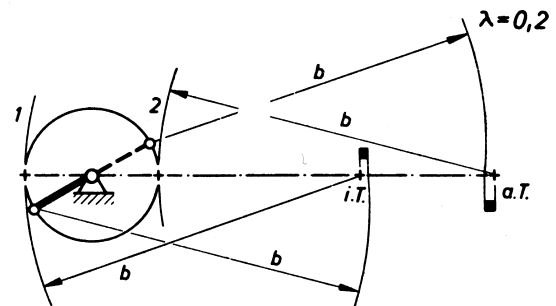
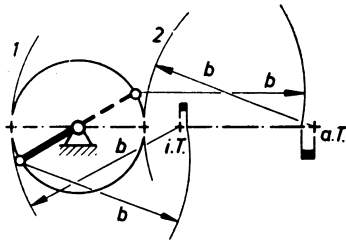


a

Hubmitte \neq Zeitmitte

b

$\lambda = 0,4$



c

Ungleiche Hubstrecken für gleiche Hubzeiten

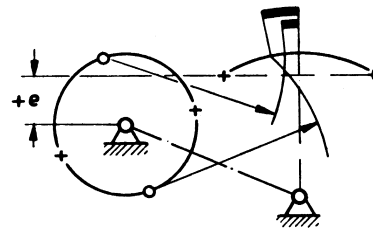
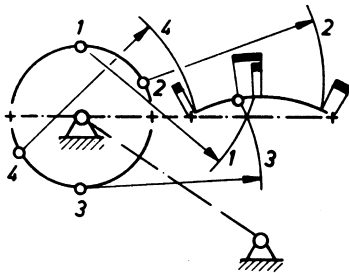
d

$\lambda = 0,4$

zentrische Kurbelschwinge

nach oben exzentrische Kurbelschwinge

$\lambda = 0,4$



e

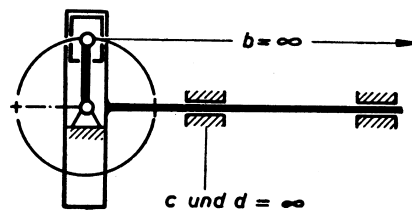
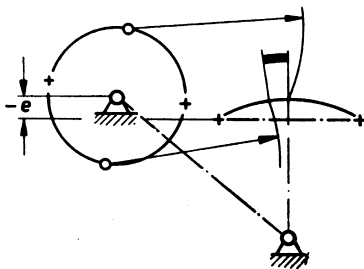
f

$\lambda = 0,4$

nach unten exzentrische Kurbelschwinge

Kreuzschubkurbel

$\lambda = 0$



g

h